

Surveyed July 6, 1897 Surveyed July 7, 1894

Filed August 2, 1897.

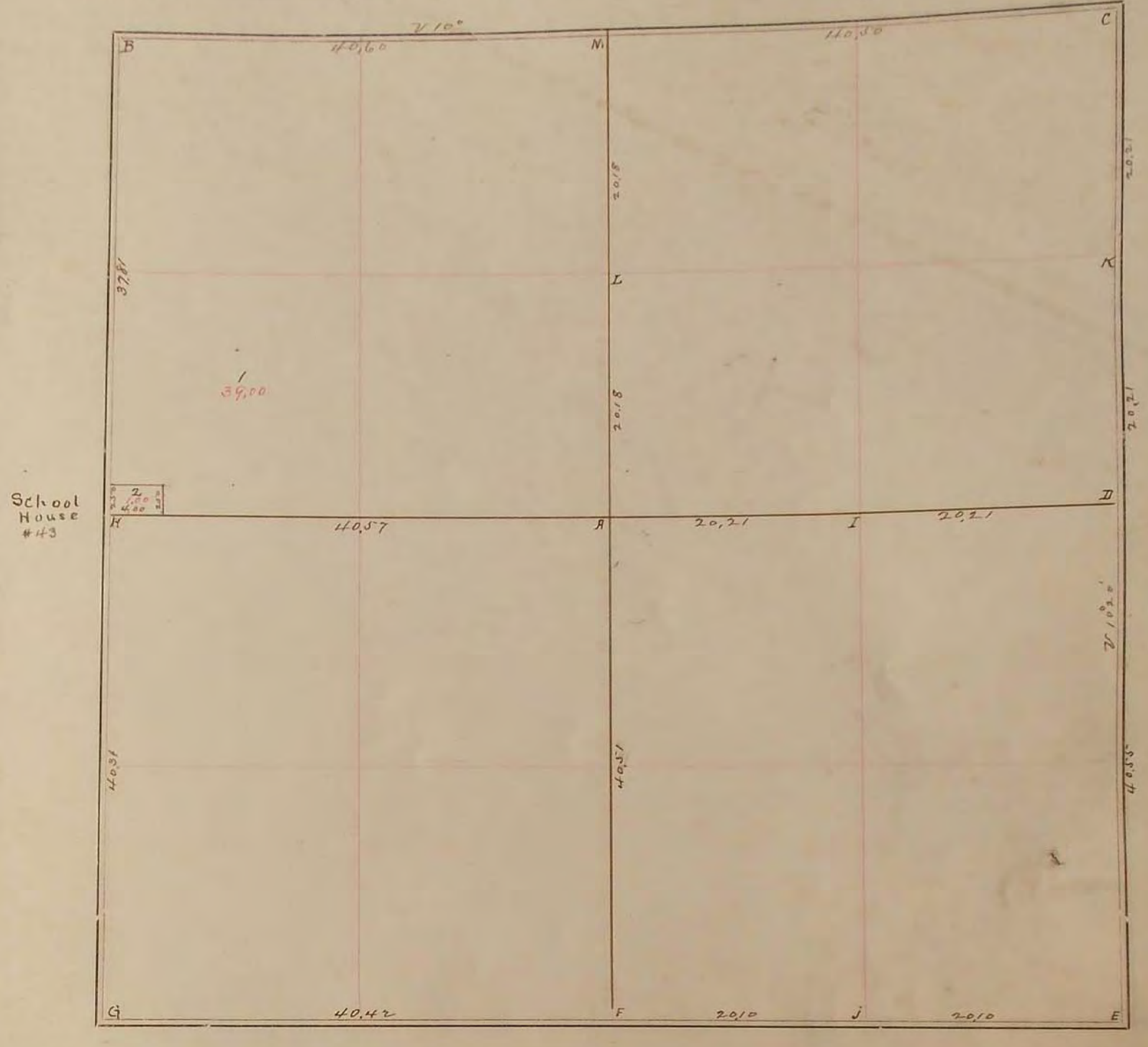
- A Boulder 12X18X24 inches
- B Gov. mound
- C Sand stone 8X8 on top
- D Gov. Mound and pits
- E Boulder 10X10X15 inches
- F Gov Mound and pits
- G Boulder 10X10X15
- H
- I
- J
- K Stake and pits
- L
- M Iron stake 1X30 inches

B. H. Hoolstencroft

10
 11
 12
 13
 14
 15
 16
 17
 18
 19
 20
 21
 22
 23
 24
 25
 26
 27
 28
 29
 30
 31
 32
 33
 34
 35

SURVEY No. 11415

Section 11 Town 105 Range 40



FIELD NOTES.

- Surveyed July 7, 1894.
- A Boulder 12x18x24 inches
- B Gov mound
- C Sand stone 8x8 on top
- D Gov. Mound & pits
- E Boulder 10x10x15 inches
- F Gov Mound and pits
- G Boulder 10x10x15
- H " " " "
- I " " " "
- J " " " "
- K Stake and pits
- L " " " "
- M Iron stake 1x30 inches

B. N. Woolstinner ft

60
 360
 360
 360